

PROCEEDINGS
OF THE
BIOLOGICAL SOCIETY OF WASHINGTON

ON SIMONELLA, A GENUS OF SALTICID SPIDERS
NEW TO NORTH AMERICA.

BY EDWARD A. CHAPIN.

Some time ago, after a collecting trip to southern Florida, Dr. Alexander Wetmore presented me with a few spiders and insects. Among these was a specimen of Salticidae, collected in connection with an ant (*Pseudomyrma* sp.) and somewhat resembling it. Study showed the spider to belong to the genus *Simonella* Peckh., a genus heretofore known only from Central and South America.

***Simonella petrunkevitchi*, n. sp.**

(Figs. 1 and 2.)

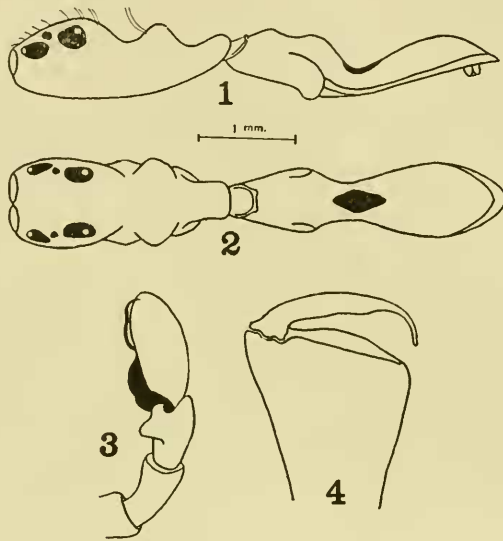
Color golden brown, eyes on black spots, abdomen with a short, dark lozenge-shaped spot dorsally on the constriction. Legs pale. Anterior median eyes very large, with a few white hairs about them. Palpus (fig. 3) moderately large, the penultimate segment with a large lateral plate-like tooth, the distal extremity of which ends in a short, stout, heavily chitinized tooth which is slightly recurved, the proximal portion is more prominent but is less heavily chitinized. Chela (fig. 4) large, vertical, without teeth on margin of the fang groove, and without the tooth at the base of the pro-margin as in *S. bicolor* Peckh., fang long, becoming suddenly thinner and more curved at its apical third, smooth, without tooth. Legs rather thin, the femora of the leg I slightly enlarged, tibia I with stout spines 3-3, metatarsus I with stout spines 2-2, leg formula¹ apparently 4 3 1 2, first and third legs almost equal. Sternum elongate, narrow, pentagonal, much as in *S. bicolor* Peckh. Chitinous portion of the venter short, narrow, triangular. Spinnerets apparently ventral, a short distance before the apex, though this condition may be due to shrinkage from drying. Dorsal surface with a few setigerous punctures, otherwise smooth and glabrous. Length of male: 5 mm.

Habitat: Sebastian, Florida, February 11, 1919, running on foliage in company with *Pseudomyrma* sp., A. Wetmore, collector.

¹Specimen lacks both of the second pair of legs.

Type: An adult male in the collection of the author.

Dedicated to my former instructor, Dr. Alexander Petrunkevitch, in appreciation of his contributions to the science of arachnology.



***Simonella myrmeciaeformis* (Tacz.).**

Janus myrmeciaeformis Taczanowski, *Horae Soc. Ent. Rossicae*, Vol. 8, p. 125, pl. 4, fig. 9 (1871).

Simonella myrmeciaeformis Peckham, *Occas. Papers Nat. Hist. Soc. Wisconsin*, Vol. 2, no. 1, p. 81, pl. 7, fig. 4 (1892).

It seems evident that the above cited descriptions do not refer to the same species. Taczanowski's material came from French Guiana and was described as being ochre-yellow with four black spots on the head and with two pale annulations on the abdomen. Peckham in his 1892 paper, redescribed the species as with a black head, a white band around the constriction, and with the posterior segment of the abdomen dark brown. The original locality (French Guiana) is cited and an additional locality, Chapoda (Chapada), Brazil (Collection (H. H.) Smith). It is probable that the Brazilian specimen or specimens represent the species described by Peckham and that it is an unnamed species. For numerous reasons I do not care to attach a name to the description.

***Simonella americana* Peckh.**

Simonella americana Peckham, *Proc. Nat. Hist. Soc. Wisconsin*, p. 23, Pl. 1, fig. 1 (1885); Peckham, *Occas. Papers Nat. Hist. Soc. Wisconsin*, Vol. 2, no. 1, p. 80, Pl. 7, fig. 3 (1892).

